

Total Area: 50.9 m² ... 548 ft²
All measurements are approximate and for display purposes only.

Lounge/Dining room
15'1" x 10'4"

Bedroom
9'4" x 11'3"

Kitchen
9'7" x 9'5"

Bathroom
9'7" x 6'11"

WC

Garden
26'2" x 16'10"



BAKERS AVENUE, WALTHAMSTOW
£1,800 Per Calendar Month
1 Bed Flat

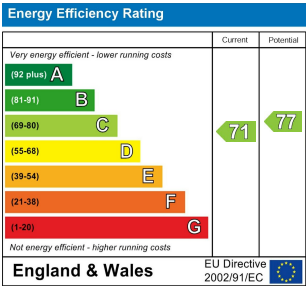


Features:

- Available Early March
- First Floor Apartment
- One Bedroom
- Oodles of Natural Light
- Private Garden
- Excellent Order Throughout
- Part Furnished

A beautiful first floor one bedroom apartment, off Hoe Street by Bakers Arms. Finished to an elegant high standard, with its own front door and low maintenance private garden, this is a lovely home in a handy, historical spot.

The historic crossroads of Bakers Arms is also a handy transport hub, with buses to Epping Forest and Hackney. There's also a wealth of independent shops including the Pictorem gallery and the heart of the Village, Walthamstow's picturesque old town, is only twelve minutes away on foot and filled with exciting places to eat and drink.



E11, E7, E12 & E15
hello11@stowbrothers.com
0203 397 2222

E4 & N17
hello4@stowbrothers.com
0203 369 6444

E17 & E10
hello17@stowbrothers.com
0203 397 9797

E18 & IG8
hello18@stowbrothers.com
0203 369 1818

E8, E9, E5, N16, E3 & E2
hellohackney@stowbrothers.com
0208 520 3077

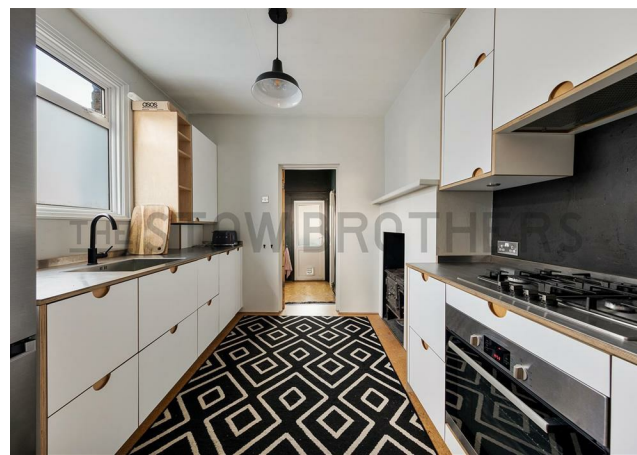
New Homes
newhomes@stowbrothers.com
0203 325 7227

Investment & Development
id@stowbrothers.com
0208 520 6220

Property Maintenance
propertymanagement@stowbrothers.com
0203 325 7228

STOWBROTHERS.COM
@STOWBROTHERS

REQUEST A VIEWING
0203 397 9797



IF YOU LIVED HERE...

Your first floor landing leads you straight into your kitchen, a ninety square foot space with cork tiling underfoot. Elegant units are topped by sleek stainless steel worktops. Your gorgeous bathroom sits to the end, another generous space with a built in utility cupboard making for the perfect laundry nook. Your tub with tiled surround, side taps and shower sits next to a vanity sink, and more cork tiling lies underfoot. You'll find steps down to your garden from here, with railway sleeper bedding and

a large pebbled area.

Back inside, your bedroom has a garden view and 105 square foot of relaxing space. An ebony hearth forms a centrepiece, and hanging rails occupy one alcove. Both the walls and carpet are in soft neutral tones, with an unfinished feature wall of plaster. To the front is your 160 square foot lounge, with twin double glazed windows. Bespoke shelving and cupboards fill the alcoves, and original cornicing sets off the ceiling.



WHAT ELSE?

It's only 0.6 miles to Walthamstow Central, where the Victoria Line will take you to Kings Cross in around a quarter of an hour, plus we're at the top of the line here so you'll always get a seat, while the Overground will get you to Liverpool Street in twenty minutes. You're also half a mile from the wonderful Village. Less than twenty minutes' walk takes you to the glorious green space of Leyton Flats.

REQUEST A VIEWING
0203 397 9797

FOLLOW US ➔ @STOWBROTHERS
STOWBROTHERS.COM